

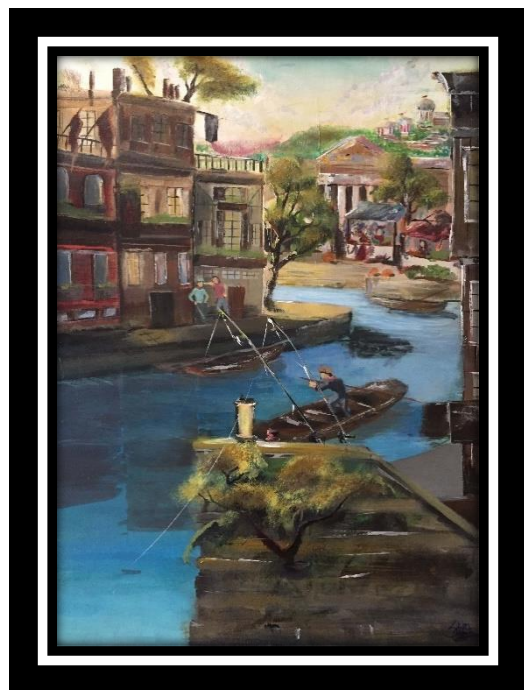


News release

Feb. 24, 2020

Everett Public Schools 22nd Annual Student Art Shows

Student artwork fills Community Resource Center each year



"New Venice" by Srivishnu Chandramouli was the 2019 Superintendent's Choice.

EVERETT – Everett Public Schools, in partnership with the Everett Public Schools Foundation (EPSF), is pleased to announce the 22nd Annual Art Shows for spring 2020.

Visual Arts programs in Everett Public Schools emphasize the Four C's of Art (craftsmanship, composition, communication and creative process), while giving students the opportunity to work with a wide variety of methods and media.

The best work of our student artists will be displayed in the foyer of the Community Resource Center on the days listed below. The public is invited to view the art during regular business hours: Monday through Friday from 7:30 a.m. to 4:30 p.m.

Elementary School

This year we kick off the shows with elementary school art. The Elementary School Art Show will be open for public viewing February 25 – March 20.

High School

The High School Art Show is open for public viewing April 6 - 24. The awards reception is April 15, from 6 to 7:30 p.m., at the Community Resource Center. In addition to student awards, there are two special awards announced at the reception:

- The Superintendent's Choice Award – sponsored by the EPSF, Superintendent Dr. Ian Saltzman selects a piece of art from the show for purchase and permanent display at the district office.
- The Everett Public Schools Foundation Scholarship Award – awarded to a high school senior for excellence in the visual arts.

Middle School

The Middle School Art Show will be open for public viewing May 4 - 28. The awards reception is May 27, from 6 to 7:30 p.m., at the Community Resource Center.

Thank you for supporting these amazing student artists.

---end---

For more information:

[Kathy Reeves](#), Director of Communications, 425-385-4040

[Georgia Lindquist](#), Director, Humanities and Secondary Literacy, 425-385-4064